

AUSTRALIA & NEW ZEALAND

OPERATORS MANUAL

WEEDWIPERS



IMPORTANT

Read this handbook carefully before operating your machine.

AUSTRALIA

1800 836 313

NEW ZEALAND

0800 55 11 55

www.redbackagri.com

Proudly Manufactured By

Redback Wiper:

Is a weed wiper product designed for the application of herbicide to weeds. Herbicide can easily be applied to weeds that stand higher than the surrounding pasture or crop with a Redback Wiper. Herbicide is saved because only the desired weeds are wiped

Available Options:

The Redback Wiper is available in different configurations:

- 2.4m wiper - main centre section with tank
- 4.8m wiper - main centre section with 1.2m wings & tank
- 6.2m wiper - main centre section with 1.9m wings & tank

Wing sections & or tank can be retrofitted at a later date

Warranty:

This machine is under warranty for defective workmanship for a period of Twenty four months effective from the date of retail sale. Warranty is null & void if machine has been rough treated or poorly serviced

Safety & Accident Prevention

It is essential that the personnel involved in the use of this machine are trained in its use

- All Wiper & herbicide safety instructions must be adhered to.
- Before mixing & applying herbicide and toxic compounds read container label and the manufacturer's recommendations for safety & handling.
- Use extreme caution when travelling on ground as rollover may occur resulting in damage to machine & injury to operator
- The use of the Wiper is restricted to the functions for which it has been designed, which have been described in the Operators Manual. The manufacturer will not be held responsible for any damages to things or injuries to people caused by the wrong use of the wiper
- Make sure no bystanders (especially children) or animals are in the working area.
- After using the wiper, turn the vehicle engine off & apply the handbrake.
- When using on public roads, abide by the national traffic code.
- Wiper wings must be folded up when going through gateways & travelling on farm tracks.
- When doing maintenance on the wicks take extreme care, due to thistles and chemical imbedded in the felt. Wear chemical resistant gloves.
- We remind you that a careful operator is the best insurance against accidents
- Read the Operators Manual before operating machine

Weed Wiper Operating Instructions

Height Adjustment:

The 2.4m & 4.8m wipers have seven height settings for the wheels and an adjustable jack for the draw bar

- For the main frame, remove the “D” pin on the wheel adjustment & set the wheels at the desired height
- Turn the draw bar adjustment jack & set so the frame is level
- The wiper wings have adjustable wheels. Set the wings so that they are level with the main frame when on level ground

The 6.2m wiper comes standard with adjustable jacks on the main centre section

Set the Weed Wiper as low as possible so:

- The wicks make good contact with the weeds thereby ensuring they get good dose of weed killer.
- There is no damage to the crop or pasture.
- The frame does not strike the ground

First time use of wiper:

- It will be necessary to wet the wicks thoroughly, to break the “surface tension” of the fabric.
- Set the wiper up so it is level.
- Squirt the outside of wicks **thoroughly** with a garden hose.
- Put some detergent soap (dish wash liquid) into the hose connection under the tank.
- Plug in your garden hose to hose connector under the tank and run water slowly until the wicks are dripping. **Use low pressure.**
- Connect tank female fitting to wiper and press pump switch until the wicks are dripping.
- The wicks should be very wet but not dripping during application.
- Check during operation by touching the underside of wicks with boot.
- With a little trial & error you can maintain the wetness of the wicks.

Button Switch:

- Wipers come standard with a spring return Button Switch.
- You will need to depress at regular intervals depending on the density of weeds

Timer Switch

An optional timer switch is available with variable timed off/on.



Timer Application Rates:

- Set the time according to the density of weeds in the pasture
- The wicks should be very wet but not dripping during application.
- Check during operation by touching the underside of wicks with boot.
- With a little trial & error you can maintain the wetness of the wicks.
- Times vary from 0.8 sec on & 12 sec off to 6 sec on & 6 sec off

Redback Wiper		
Timer Settings - Seconds		
Setting no	Time on	Time off
1	0.8	12
2	1.0	11
3	2.0	10
4	3.0	9
5	4.0	8
6	5.0	7
7	6.0	6

Application Rates:

- | | | | |
|----------------------|---------------------------|-------|-------|
| • Glyphosate | Thistles, Rushes, Ragwort | mix @ | 1:10 |
| • Tordon Max | Thistles, Ragwort | mix @ | 1:20 |
| • 24-D - 680 | Thistles, Rushes, Ragwort | mix @ | 1:10 |
| • Versatill Powerflo | Thistles, Ragwort | mix @ | 1:100 |

Use of an Adjuvant will enhance the herbicide performance, mix @1:100

If you are driving some distance to the field, we suggest putting the required amount of water in the tank first, then mixing the chemical at the field. This will save leakage & wasted chemical.

Driving speed:

- Drive at 10 km/h. Drive slower for a better strike rate and in heavy weed infestations.

For best strike rate:

- Use clean fresh water
- Don't wipe in hot dry conditions
- Weeds should be under no stress & growing
- Pasture should be grazed down so that wiper can be set lower for better wick contact
- You can drive over weeds from two directions to double wipe weeds and get a better strike rate

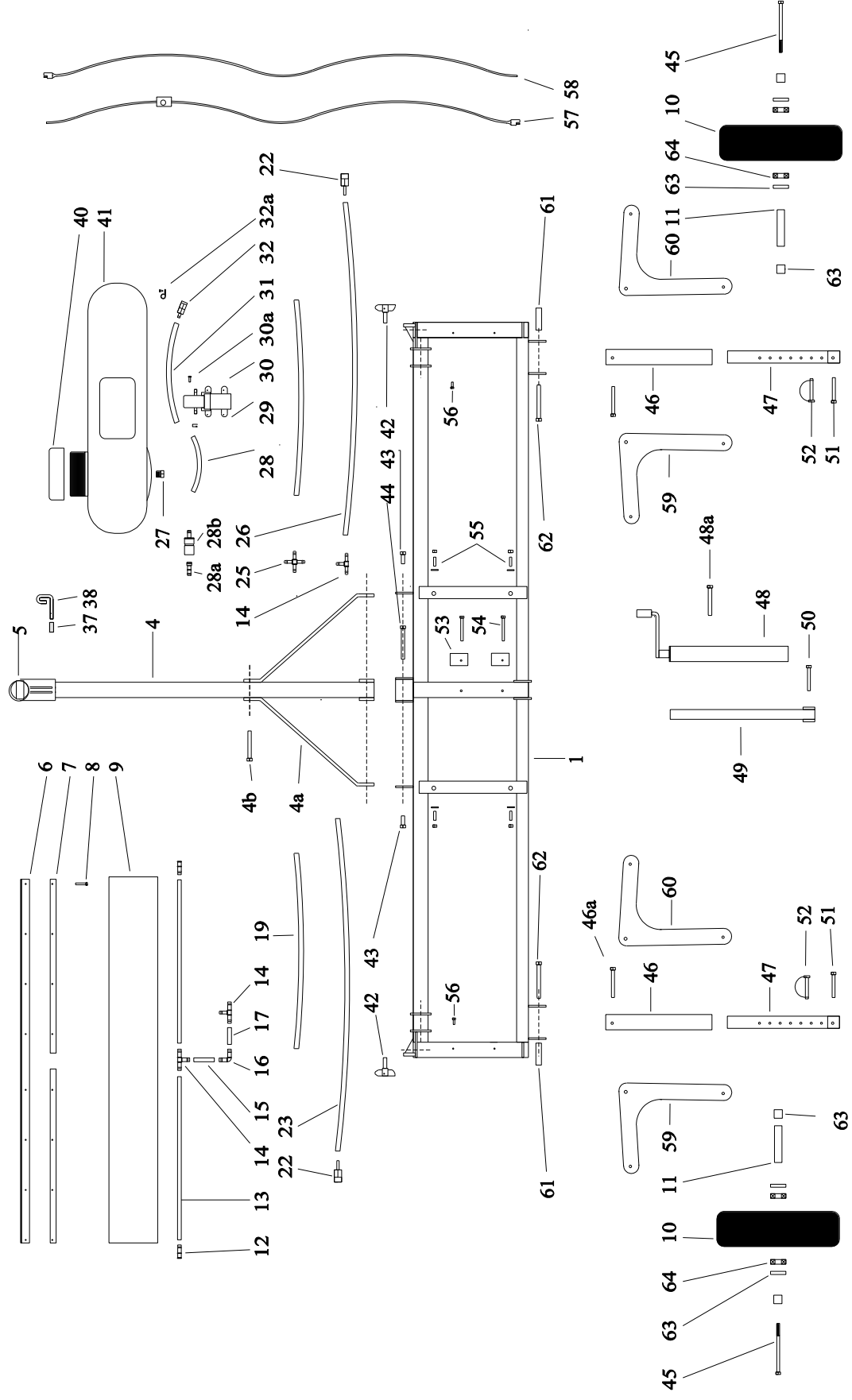
After Use:

- Empty & flush tank,
 - Connect garden hose to hose connector under tank and flush wicks for 10 - 15 mins. **Do not use high pressure**
 - Some herbicides will crystallize if left to dry out
- Herbicide may lose strength over time while sitting mixed
- Check the wicks for wear & replace wicks that are past using

Redback Wiper 2.4 Spare Parts

<u>Part no</u>	<u>Part</u>
WP. WO - 1	Wiper Main Frame - 2.4m
WP. WO - 4	Wiper Drawbar Including Coupling
WP. WO - 4a	Wiper Drawbar Side Stay
WP. WO - 4b	M12 x 90 HT bolt
WP. 0/6T -1	Towball coupling
WP. WO - 6	Wick Mounting Angle Bar -1.2m
WP. WO - 7	Wick Retainer Bar - 0.6m
WP. WO - 8	12g x 30 tek screw
WP. WO - 9	Wick Felt - 1.2m
WP. WO - 10	Wheel - 2.50-8
WP. WO - 11	Wiper Axle
WP. WO - 12	13mm Plastic End Plug
WP. WO - 13	Soaker Tube - 570mm
WP. WO - 14	13mm Plastic Tee
WP. WO - 15	Soaker Tube Riser - 70mm
WP. WO - 16	13mm Plastic Elbow
WP. WO - 17	Soaker Tube Connector - 67mm
WP. WO - 18	10mm - 13mm Plastic Tee
WP. WO - 12/17	Soaker Hose Kit
WP. WO - 9/17	Soaker Hose & Felt
WP. WO - 6/17	Wick Kit complete
WP. WO - 19	10mm Hose - 530mm
WP. WO - 20	10mm Hose - 640mm
WP. WO - 21	Brass Quick Connector - male
WP. WO - 22	Brass Quick Connector - female
WP. WO - 23	10mm Hose - 1050mm
WP. WO - 24	10mm Plastic Tee
WP. WO - 25	13mm Plastic Cross
WP. WO - 26	10mm Hose - 1160mm
WP. WO - 27	1/2 BSP Tank Plug
WP. WO - 28	10mm Hose - 280mm
WP. WO - 28a	Garden Hose Connector - Male
WP. WO - 28b	Garden Hose Connector - Female
WP. WO - 29	10mm Hose Clamp
WP. WO - 30	3.8 l/min 12v pump
WP. WO - 30a	M5 x 16 screw
WP. WO - 31	8.5mm Suction Hose - 500mm
WP. WO - 32	10mm Suction Filter
WP. WO - 32a	"P" clamp & screw
WP. WO - 40	Tank Lid - 152mm
WP. WO - 41	50 litre tank
WP. WO - 28 / 41	50 litre tank, pump, lid, suction hose
WP. WO - 42	12mm Drop Lock Latch
WP. WO - 43	M12 x 40 Ht bolt & nyloc nut
WP. WO - 44	M12 x 100 Ht bolt & nyloc nut
WP. WO - 45	M10 x 160 Ht bolt & nyloc nut
WP. WO - 46	Wheel Adjustment Slide - outer
WP. WO - 47	Wheel Adjustment Slide - inner
WP. WO - 48	Wiper Lift Jack - Outer
WP. WO - 49	Wiper Lift Jack - Inner
WP. WO - 50	M10 x 75 HT bolt & nyloc nut
WP. WO - 51	M10 x 90 HT bolt & nyloc nut
WP. WO - 52	3/8" Shaft Locking Pin
WP. WO - 53	Wick Mount Clamp
WP. WO - 54	M8 x 75 HT bolt & nyloc nut
WP. WO - 55	M8 x 35 grub screw, washers & nut
WP. WO - 56	M6 x 16 HT bolt & nyloc nut
WP. WO - 57	Quad Wiring Loom & Switch
WP. WO - 58	Tank Wiring Loom
WP. WO - 59	Wiper Wheel Arm - LH
WP. WO - 60	Wiper Wheel Arm - RH
WP. WO - 61	Wheel Arm Spacer
WP. WO - 62	M12 x 110 HT bolt
WP. WO - 63	Wheel Spacer
WP. 01356 - 63	Seal - 52/30/8
WP. 01356 - 64	6205 bearing

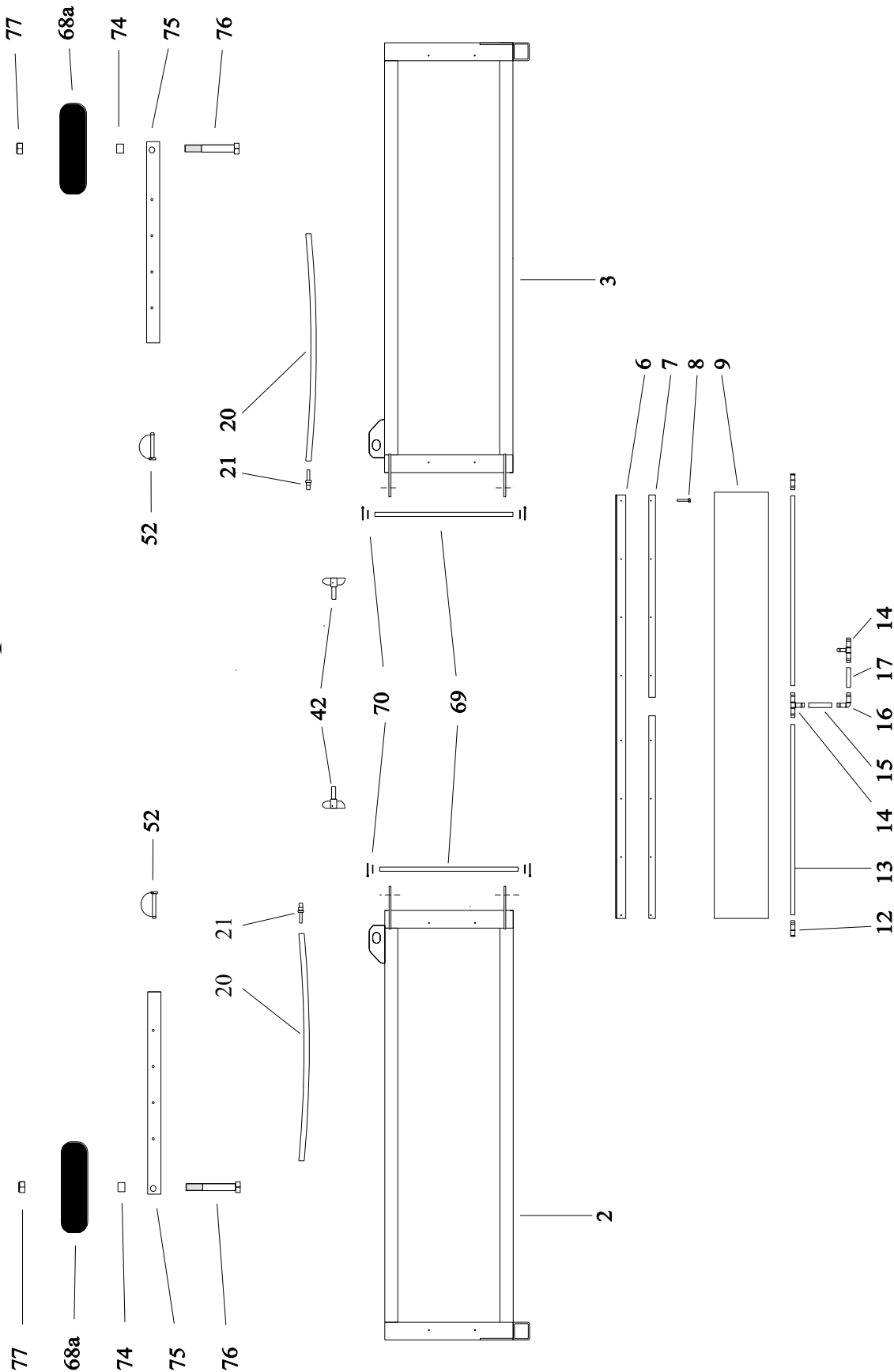
Redback 2.4m Wiper Parts



Redback Wiper 1.2 Extension Spare Parts

<u>Part no</u>	<u>Part</u>
WP. WO - 2	Wiper Left Hand Extension - 1.2m
WP. WO - 2/42	Wiper Left Hand Extension - 1.2m - complete
WP. WO - 3	Wiper Right Hand Extension - 1.2m
WP. WO - 3/42	Wiper Right Hand Extension - 1.2m - complete
WP. WO - 2/3/42	Wiper Extension Kit - 2.4m - 4.8m
WP. WO - 6	Wick Mounting Angle Bar -1.2m
WP. WO - 7	Wick Retainer Bar - 0.6m
WP. WO - 8	12g x 30 tek screw
WP. WO - 9	Wick Felt - 1.2m
WP. WO - 12	13mm Plastic End Plug
WP. WO - 13	Soaker Tube - 570mm
WP. WO - 14	13mm Plastic Tee
WP. WO - 15	Soaker Tube Riser - 70mm
WP. WO - 16	13mm Plastic Elbow
WP. WO - 17	Soaker Tube Connector - 67mm
WP. WO - 12/17	Soaker Hose Kit
WP. WO - 9/17	Soaker Hose & Felt
WP. WO - 6/17	Wick Kit complete
WP. WO - 19	10mm Hose - 530mm
WP. WO - 20	10mm Hose - 720mm
WP. WO - 21	Brass Quick Connector - male
WP. WO - 68a	350/4 wheel
WP. WO - 42	12mm Drop Lock Latch
WP. WO - 69	Extension Pivot Rod
WP. WO - 70	3.2 Split Pin & Washer
WP. WO - 74	Extesnion Wheel Spacer
WP. WO - 75	Extension Wheel Slider
WP. WO - 76	M20 x 150 Bolt
WP. WO - 77	M20 nyloc nut

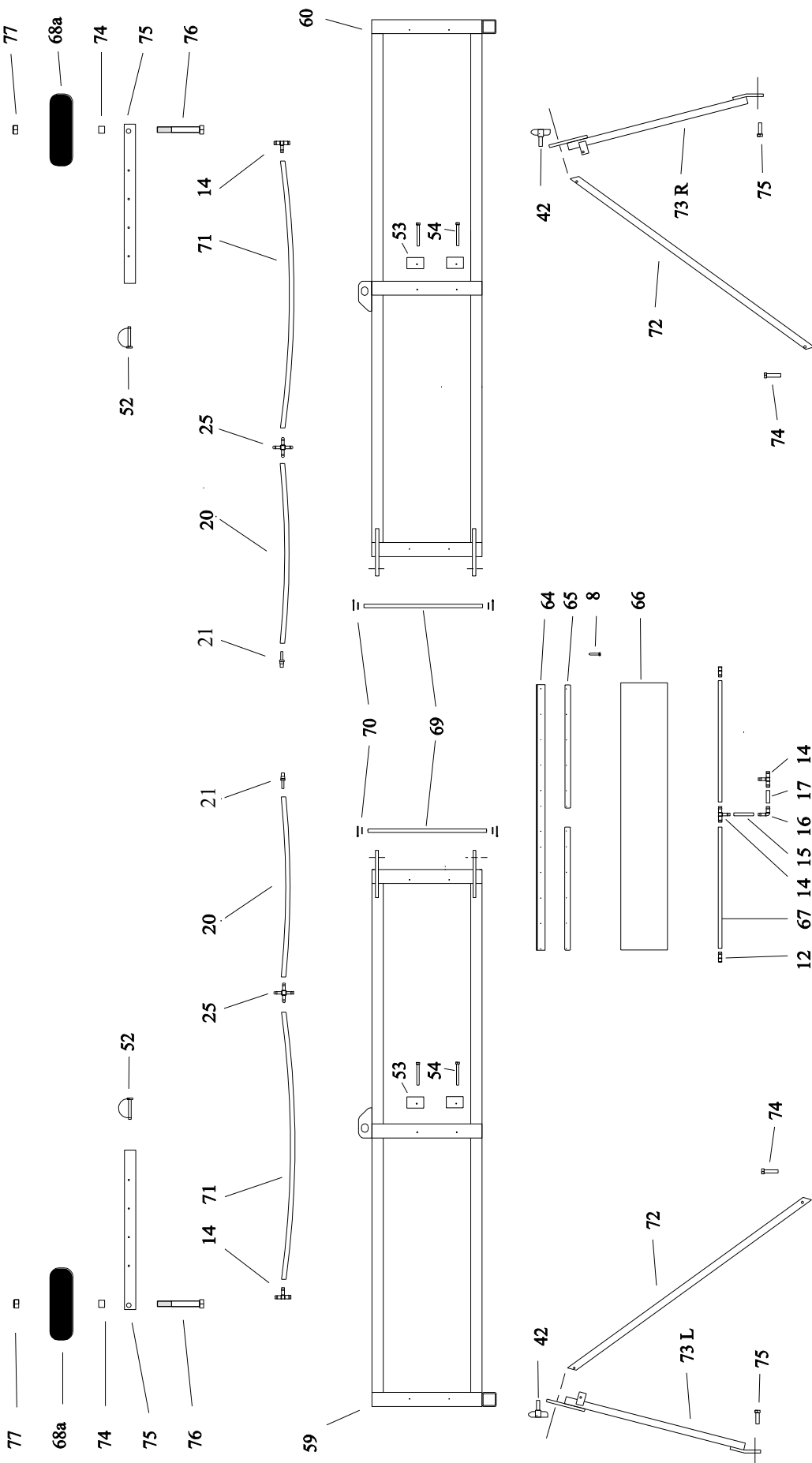
Redback 4.8m Wiper Extension Parts



Redback Wiper 1.9m Extension Spare Parts

<u>Part no</u>	<u>Part</u>
WP. WO - 8	12g x 30 tek screw
WP. WO - 20	10mm Hose - 640mm
WP. WO - 21	Brass Quick Connector - male
WP. WO - 14	13mm Plastic Tee
WP. WO - 25	10mm Plastic Cross
WP. WO - 42	12mm Drop Lock Latch
WP. WO - 53	Wick Mount Clamp
WP. WO - 59	Wiper Left Hand Extension - 1.9m
WP. WO - 59/75	Wiper Left Hand Extension - 1.9m - complete
WP. WO - 60	Wiper Right Hand Extension - 1.9m
WP. WO - 60/75	Wiper Right Hand Extension - 1.9m - complete
WP. WO - 59/60/75	Wiper Extension Kit - 2.4m - 6.2m
WP. WO - 64	Wick Mounting Angle Bar -0.95m
WP. WO - 65	Wick Retainer Bar - 0.46m
WP. WO - 66	Wick Felt - 0.95m
WP. WO - 67	Soaker Tube - 400mm
WP. WO - 64/76	0.95m wick Kit complete
WP. WO - 68a	350/4 wheel
WP. WO - 69	Extension Pivot Rod
WP. WO - 70	3.2 Split Pin & Washer
WP. WO - 71	10mm Hose - 950mm
WP. WO - 72	6.2 Extension Receiver Bar
WP. WO - 73L	6.2 Extension Receiver - LH
WP. WO - 73R	6.2 Extension Receiver - RH
WP. WO - 74	Extesnion Wheel Spacer
WP. WO - 75	Extension Wheel Slider
WP. WO - 76	M20 x 150 Bolt
WP. WO - 77	M20 nyloc nut

Redback 6.2m Wiper Extension Parts



Wiper Final Assembly Instructions



1. Fit Tank:

- Remove M8 nyloc nuts & one washer from each tank stud
- One washer plus rubber washer retainer will be one each stud
- Sit Tank on mounts & hold in place with washer & M8 nyloc nut

2. Connect feed hose connector:



1. Fit Drawbar with:

- M12 x 110 bolt at rear of Drawbar Stem
- M12 x 90 bolt at front of Drawbar Stays
- M12 x 40 bolt either side at rear of Drawbar Stays

2. Fit Centre Lift Jack with:

- M10 x 75 bolt at rear
- M12 x 90 bolt on Drawbar upright

Fit all bolts with nyloc nuts and tighten.



Wiper Main Frame Wheel & 4.8 Extension Fitting

1. Fit Wiper Main Frame Wheel & Adjuster with:
 - M12 x 90 bolt on front pivot mount
 - M12 x 110 bolt on rear wheel pivot mount
 Fit bolts with nyloc nuts and tighten.

2. Extension Hinge Rods with:
 - 12mm washers & 3.2 split pins each end

Check drop lock travel latch fits & locks extension in travel position.



6.2m Wiper Main Frame Wheel & Extension Fitting

1. Fit Wiper Main Frame Wheel & Jack Adjuster with:
 - M12 x 90 bolt on front pivot mount
 - M12 x 110 bolt on rear wheel pivot mount
 Fit bolts with nyloc nuts and tighten.

2. Extension Hinge Rods with:
 - 12mm washers & 3.2 split pins each end



6.2m Wiper Extension Travel Bracket Fitting

Fit one left hand & one right hand travel bracket

- M12 x 40 bolt through outer bracket
- M12 x 50 bolt through inner bracket

Fit bolts with nyloc nuts and tighten.



Wiper Extension Wheel Fitting

1. Fit Wiper Extension Wheel & hold in place with "D" pin
Adjust to suit you need



Contact Us:

Phone:

1800 836 313 (AU)

0800 551 155 (NZ)

1 888 890 5556 (US & Canada)

Website:

www.redbackagri.com

Email:

customerservice@redbackagri.com

Manufactured by:

Redback Global Ltd

11 Bounty Place

Palmerston North 4414

New Zealand

